


At least your home  should be giving you full privacy!



Sunit
Isha
Homes just for a few!

| Privacy | Quality | Spaciousness |



The concept of having a home itself exemplifies the want of privacy & security apart from the basic need of shelter. In today's life, you are completely busy in your daily chores at work and that hardly leaves you with any time for your dear ones.

Here, at Isha, we offer you neighborhood of only five selected families in a home that is built on the foundation of quality, designed with the idea of lavishness, packed with amenities that are luxurious and location that is not just premium residential but is also nice & quaint.

The beauty of Baner is not only in its natural greenery but also its modern development in terms of super stores, hospitals, hotels, restaurants, offices, schools & colleges. Isha mainly provides convenience to people working on the west & south-west sector of Pune that includes the Aundh, Baner, Pashan suburbs, periphery of Bangalore-Pune-Mumbai highway that includes Hinjewadi, Maval and the other stretches of industries around.

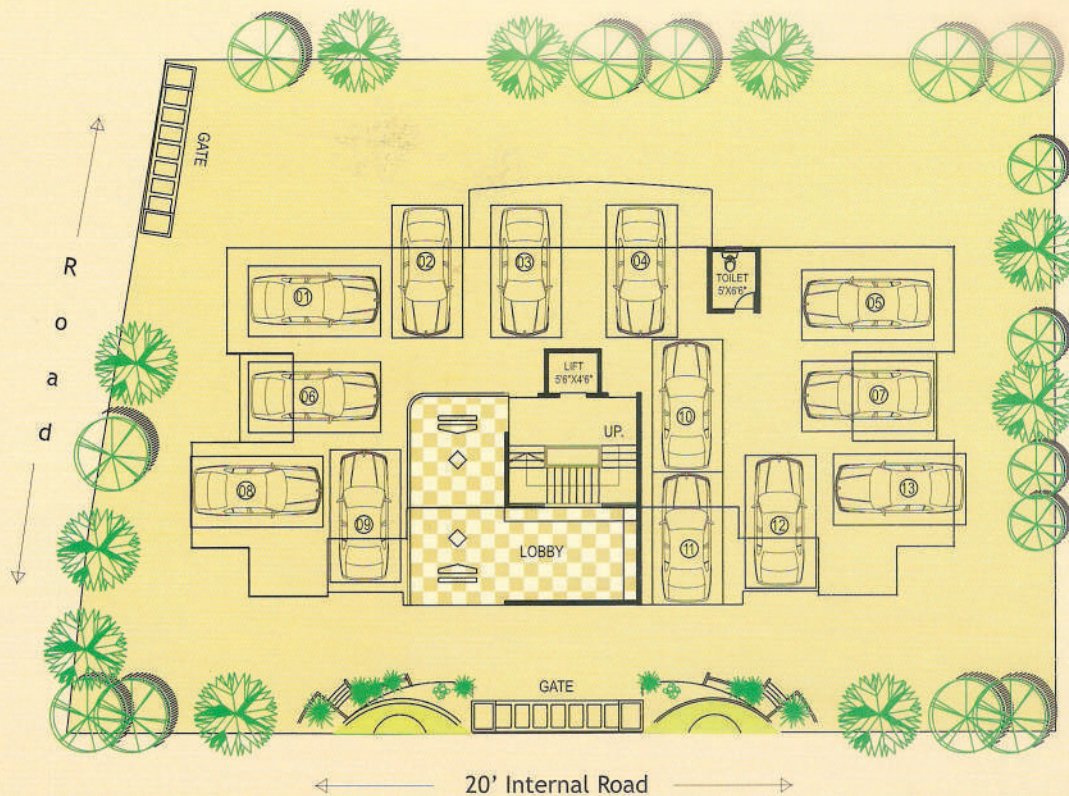
The sheer ease of exit to the highway and nearness to the main suburbs around will provide you with minimum travelling time and thus more time at you private home! So choose from a large 2 BHK, 3 BHK, duplex or a penthouse to be among the exclusive few!!



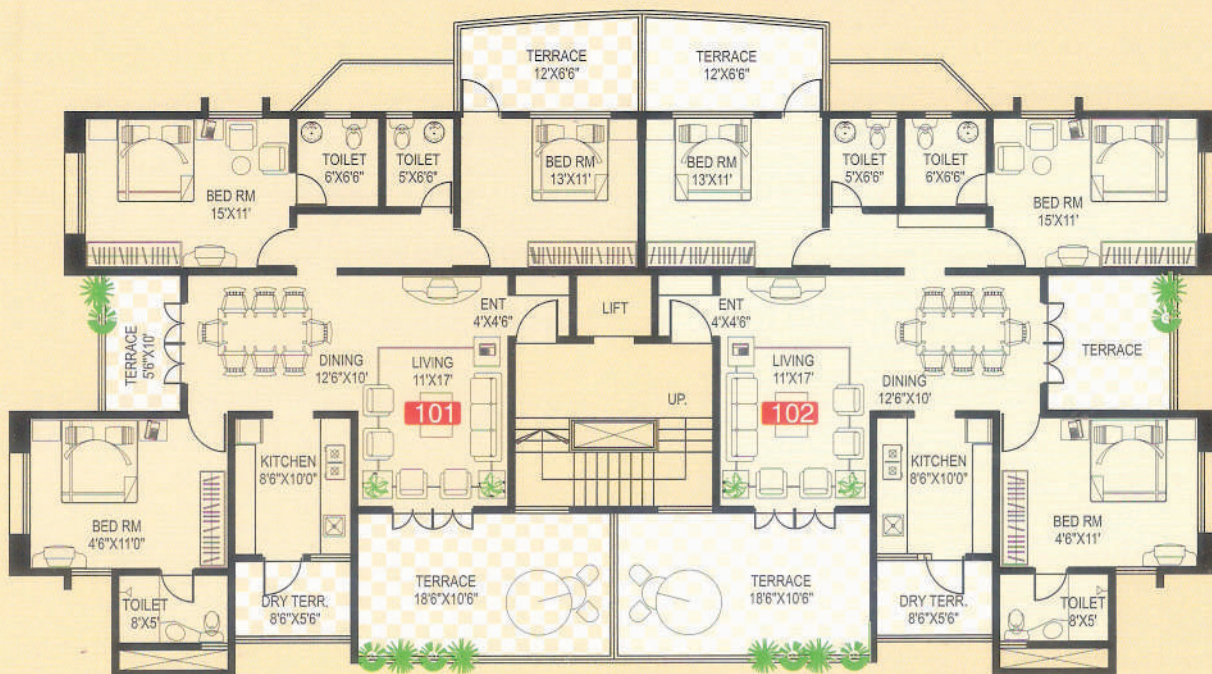


Amenities & Specifications:

- Earthquake resistant RCC structure.
- 16'x16' vitrified tiles in living, dining, bedrooms & kitchen.
- Decorative main door with brass fittings.
- Internal flush doors with premium quality fittings.
- Powder coated aluminum sliding windows with mosquito net with MS grills.
- 8' Granite top kitchen platform with SS sink, tiles up to lintel level.
- Glazed/ceramic tiles dado in toilets up to lintel level.
- Concealed plumbing with Jaguar C.P. Fittings.
- Concealed copper wiring.
- TV and telephone point in living and master bedrooms.
- Internal painting with oil bound distemper.
- External painting with texture & cement paint.
- Arrangement for solar water system.
- Intercom facility.
- Battery backup.
- Lift of standard make.

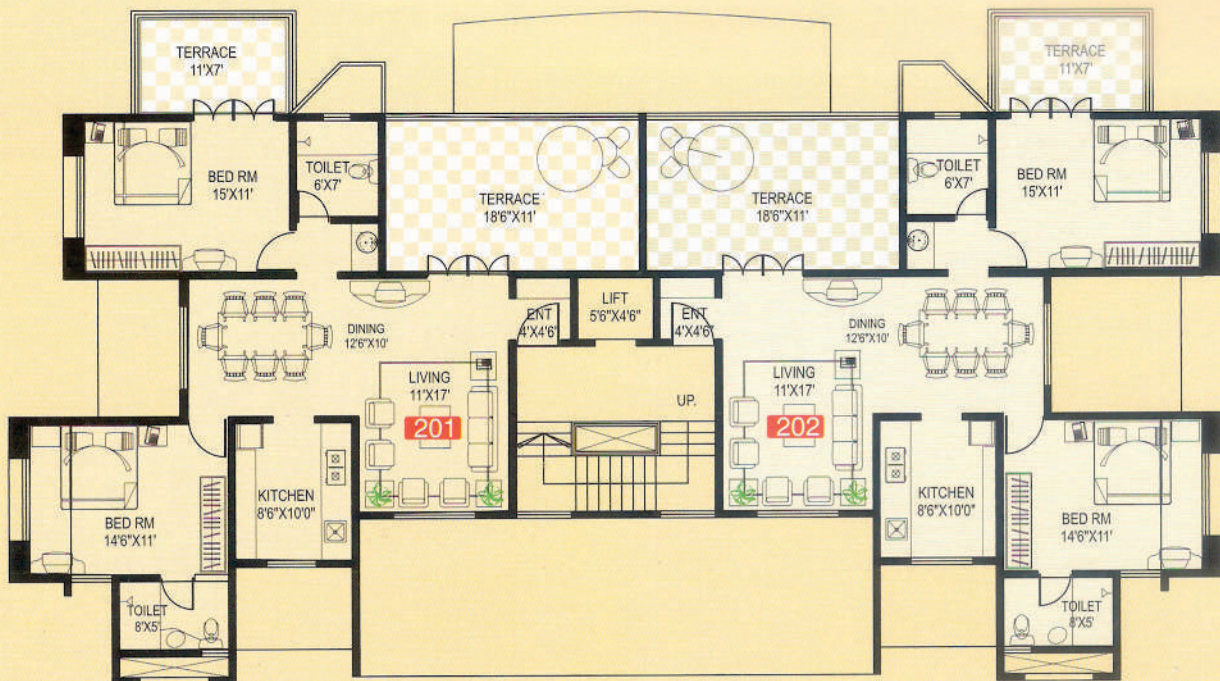


Parking Floor Plan



First Floor Plan

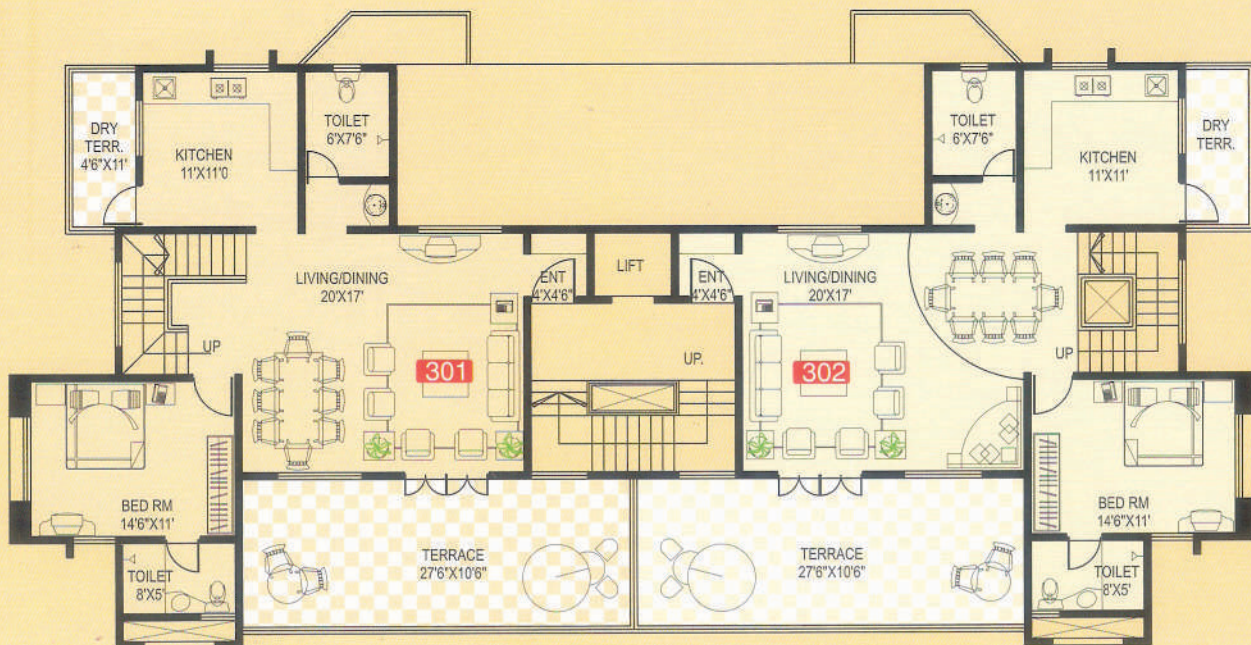
AREA STATEMENT AREA IN SQ.FT.				
FLAT NO.	TYPE	B/UP AREA	TERRACE	SALABLE AREA
101	3 BHK	1329.00	238.00	1567.00
102	3 BHK	1329.00	260.00	1589.00



Second Floor Plan

AREA STATEMENT AREA IN SQ.FT.

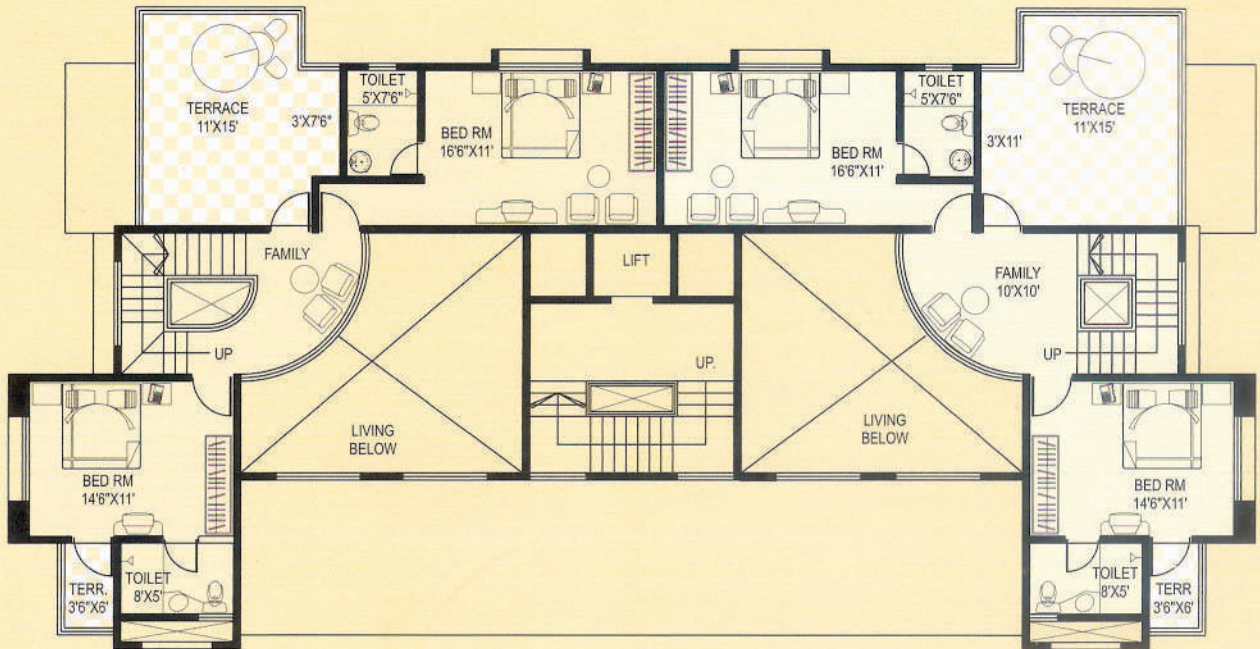
FLAT NO.	TYPE	B/UP AREA	TERRACE	SALABLE AREA
201	2 BHK	1075.00	176.00	1251.00
202	2 BHK	1075.00	176.00	1251.00



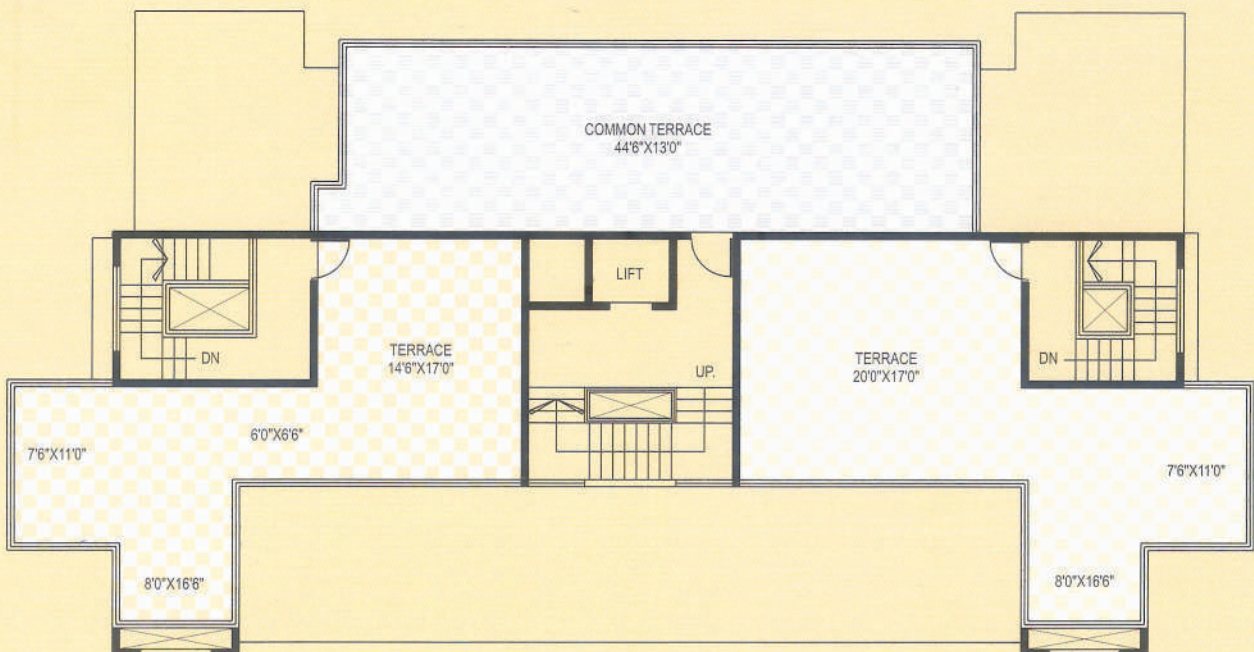
Third Floor Plan

AREA STATEMENT AREA IN SQ.FT.

FLAT NO.	TYPE	B/UP AREA	TERRACE	SALABLE AREA
301	3 BHK	1808.00	509.00	2317.00
302	3 BHK	1860.00	533.00	2393.00

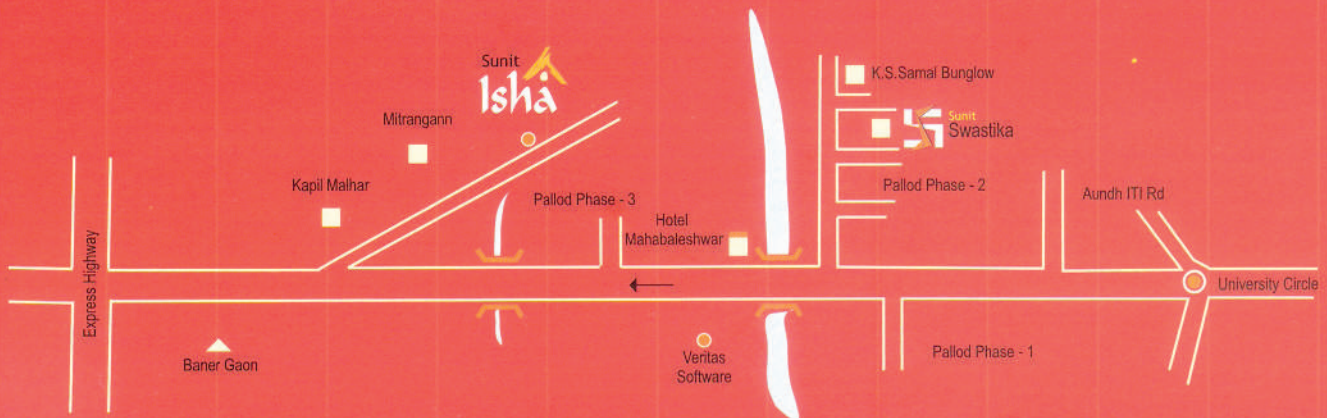


Fourth Floor Plan



Terrace Floor Plan

Location Map



Site Address:

Plot No. 10A+B, S. No. 216/1+2+3(Part)+4+5, Baner, Pune.

JUICEADCOM.COM

Privacy
Quality
Spaciousness

Credits

Architect

Shri Prakash Kulkarni

Legal Advisor

Shri Sudhakar. S. Kale

RCC Consultant

Shri G.A.Bhilare

Developers

 **SUNIT AAKASH**
ASSOCIATES
PROMOTERS & BUILDERS

562/9, Shivajinagar, Opp. Savarkar Bhavan
Pune 5, Tel: 25534062, 32914183
Mobile: 9325328520

Note : This brochure is purely conceptual & not a legal offering, nor will be part of the agreement. Number of floor & number of unit s may be revised. Developers reserve rights to ament the layout, plane, colour schemes, specifications, amenities etc.